



Tylney Avenue, SE19 | Offers In Excess Of £900,000

020 8702 9333

crystalpalace@pedderproperty.com

pedder
We live local



In General

- Spacious mid-century townhouse
- Prestigious Dulwich Estate location
- Three / four bedrooms
- Off street parking
- 1644 sq ft / 152.7 sq m
- Generous corner plot
- Quiet cul de sac
- Guest suite with shower room

In Detail

A three/four-bedroom mid-century end-of-terrace townhouse, forming part of the prestigious Dulwich Estate and perfectly positioned on the borders of Crystal Palace and Dulwich.

Exceptionally light and beautifully arranged, the property offers flexible multi-level living—ideal for a young or growing family. Thoughtfully reconfigured beyond the original 1960s layout, the ground floor now provides a superb self-contained guest suite with a 23ft bedroom/living space, utility room, shower room and fitted storage. With direct access to the garden, it’s a perfect zone for long-term guests, older children, or multigenerational living.

The first floor hosts a generous reception room with floor-to-ceiling windows and a sunny westerly aspect, together with a spacious kitchen/diner offering excellent worktop and unit space for keen cooks. Above, the second floor features two double bedrooms (both with fitted storage), a family bathroom, and a dedicated study/home-working area. The top floor provides a versatile bonus loft room with skylights and ample eaves storage—ideal as a playroom, studio or occasional bedroom.

Outside, the property enjoys one of the largest gardens on the cul-de-sac, including a substantial side plot that offers rare extension potential (STP) on the Dulwich Estate. Off-street parking is available to the front.

Tylney Avenue is a small, peaceful and community-minded street, home to a mix of families and professionals. It’s well placed for transport links at Gipsy Hill and Sydenham Hill, popular local parks, key bus routes, the Crystal Palace Triangle, and the amenities of West Dulwich and Gipsy Parade.

Offered with no onward chain.

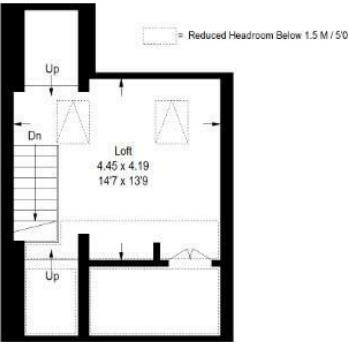
EPC: C | Council Tax Band: E



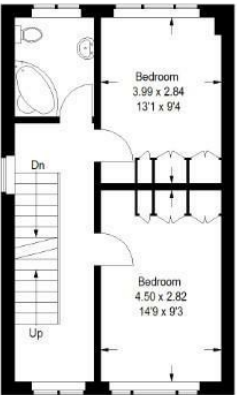
Floorplan

Tylney Avenue, SE19

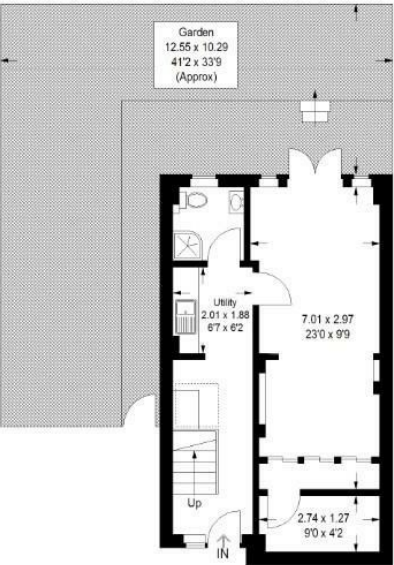
Approximate Gross Internal Area
152.7 sq m / 1644 sq ft



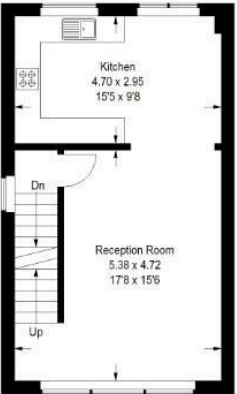
Third Floor



Second Floor

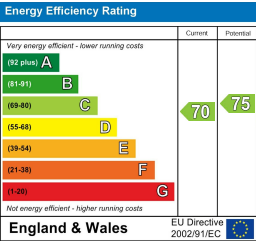


Ground Floor



First Floor

Copyright www.pedderproperty.com © 2025
These plans are for representation purposes only as defined by RICS - Code of Measuring Practice.
Not drawn to Scale. Windows and door openings are approximate. Please check all dimensions, shapes and compass bearings before making any decisions reliant upon them.



Pedder Property Ltd trading as Pedder for themselves and for the vendor/landlord of this property whose agents they are, give notice that (1) these particulars do not constitute any part of an offer or contract, (2) all statements contained within these particulars are made without responsibility on the part of Pedder or the vendor/landlord, (3) whilst made in good faith, none of the statements contained within these particulars are to be relied upon as a statement of representation or fact, (4) any intending purchaser/tenant must satisfy him/herself by inspection or otherwise as to the correctness of each of the statements contained within these particulars, (5) the vendor/landlord does not make or give either Pedder or any person in their employment any authority to make or give representation or warranty whatsoever in relation to this property.